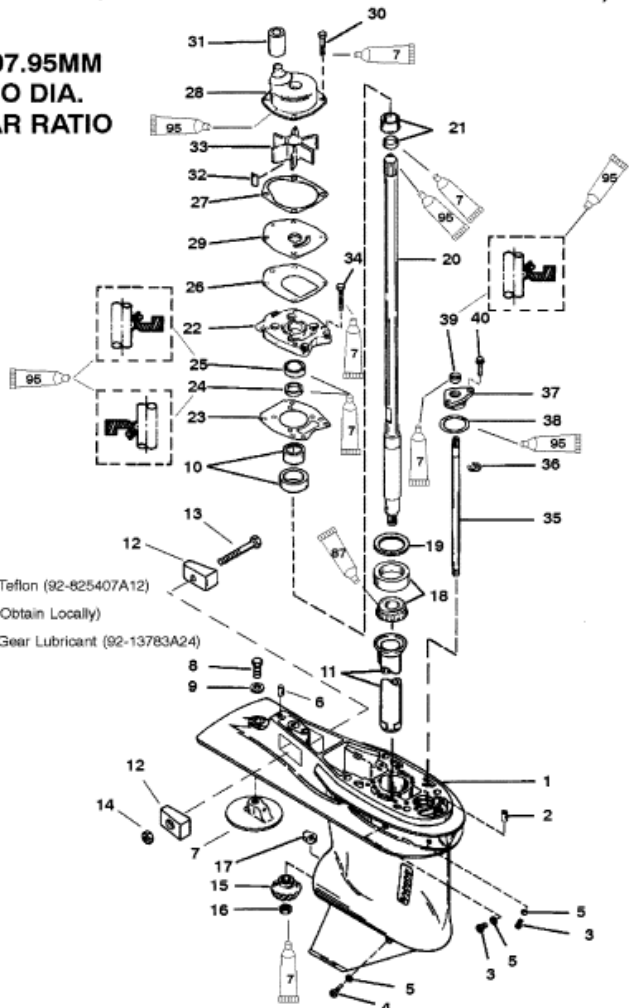


(SEE NOTE ON G/H CHART BEFORE ORDERING FROM THIS PAGE)

**4.25 IN./107.95MM
 TORPEDO DIA.
 2.31:1 GEAR RATIO**



- 2-4-C With Teflon (92-825407A12)
- Loctite 271 (Obtain Locally)
- Super Duty Gear Lubricant (92-13783A24)

				Parts List			
Ref	Class	Part	Description	Qty	Comment	Footnote	
1	1667	9011G 8	GEAR HOUSING	1	(BLACK) BASIC	3	
1	1667	9011G 9	GEAR HOUSING	1	(GRAY) BASIC	3	
2	17	43043	DOWEL PIN (FRONT)	1			
3	10	79953A 2	DRAIN SCREW	2			
4	22	67892A 1	SCREW (MAGNETIC)	1			
5	12	19183	WASHER-SEALING	3		4,8,9	
6	17	43044	DOWEL PIN (REAR)	1			
7		31640 5	TRIM TAB	1			
8	10	825427	SCREW (7/16-14 X 1-1/4)	1			
9	12	45176	WASHER	1			
10		43040A 1	CARRIER	1			
11		43046	OILER TUBE	1			
12		826134	ANODE	2			
13	10	40003 33	SCREW	1			
14	11	826833 6	NUT	1			
15	43	44484	PINION GEAR (ALSO PART OF 43)	1			
16	11	35921	NUT	1			
17		850307	SHIFT CAM	1		3	
18	31	42677A 1	TAPERED ROLLER BEARING	1			
19	15	44492A 1	SHIM ASSEMBLY	1			
20	45	43031A 1	DRIVE SHAFT ASSEMBLY	1	(LONG-32 IN.)		
20	45	43032A 6	DRIVE SHAFT ASSEMBLY	1	(LL-34-1/2 IN.)		
20	45	43032A 4	DRIVE SHAFT ASSEMBLY	1	(X-LONG-37 IN.)		
21		42461A 1	WEAR SLEEVE ASSEMBLY	1			
22		43055A 4	COVER ASSEMBLY	1		8	
23	27	43047 2	GASKET	1		4,8,9	
24	26	43036	OIL SEAL (LOWER)	1		8,9	
25	26	43035	OIL SEAL (UPPER)	1		8,9	
26	27	43033 1	GASKET	1		4,8,9	
27	27	817277	GASKET	1		4,8,9	
28		817275A 2	WATER PUMP ASSEMBLY	1		8	
29		817276	FACE PLATE	1		8	
30	10	824832 7	SCREW (M6 X 30)	4		8	
31		43023 2	SEAL	1		8,9	
32	28	43037	KEY	1		8	
33	47	43026 2	IMPELLER	1		8	
34	10	824832 6	SCREW (M6 X 25)	6			
35		853906A 1	SHIFT SHAFT ASSEMBLY	1	(LONG-12 IN.)	3	
35		853907A 1	SHIFT SHAFT ASSEMBLY	1	(LL-14-1/2 IN.)	3	
35		853908A 1	SHIFT SHAFT ASSEMBLY	1	(X-LONG-17 IN.)	3	
36	52	28641	E RING	1			